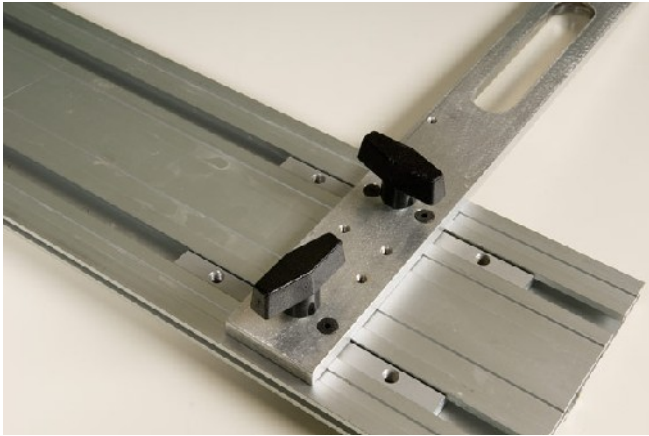


# Squaring The Sliding Square

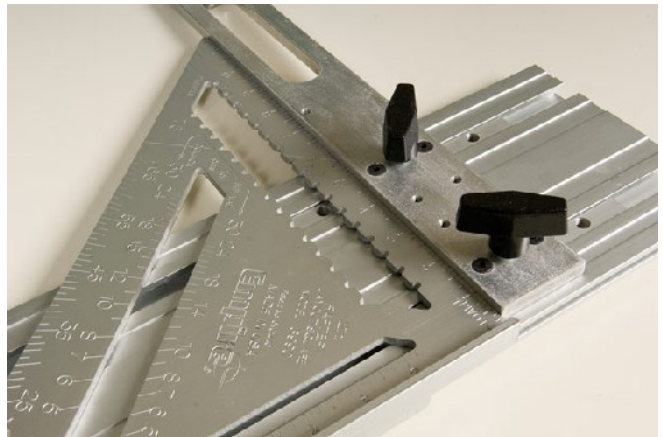


The Sliding Square is aligned when it leaves the factory. If the square should ever get bumped, or you feel it is out of alignment, it is very easy to check for squareness and realign if necessary.

---

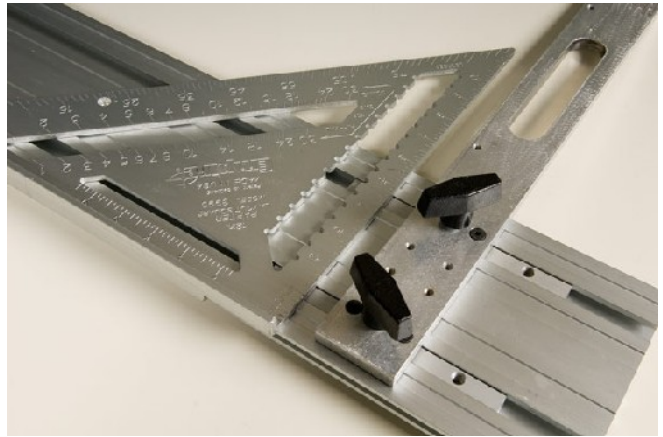
First check to see if the sliding square is square to the guide edge. Remove the white anti-chip edges or slide them out of the way. Now check for squareness to the edge guide using a square that you know to be square.

If all is square then the square is properly squared to the guide rail. If there are gaps indicating a lack of squareness then proceed through the rest of this instruction set.



Loosen the two knobs on the square. Use a hex key wrench to loosen the four set screws.

Line up the square with the edge of the guide rail and hold firmly.



Slide the EZ Square up to the other square. With everything lined up square you tighten the two black knobs.

Use a spring clamp to hold the pieces tightly together so there is no movement when you re-tighten the set screws.

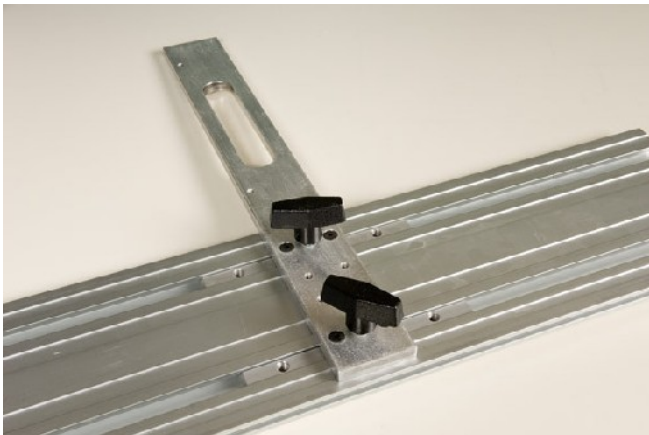
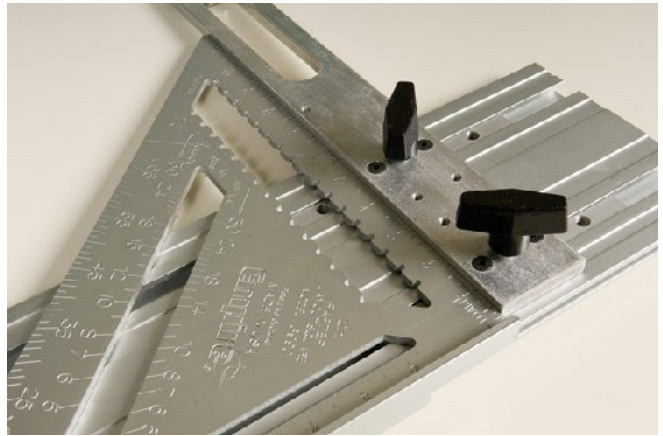




Use the hex key wrench to tighten the four set screws. The set screws should be tightened firmly, but there is no need to over tighten.

---

Loosen the black knobs so that your EZ square slides freely, and slide it back and forth on the guide rail. Now slide it up against the other square and tighten the black knobs and make sure it is still aligned properly.



You have now successfully realigned your sliding square!

---

If the square still isn't square, repeat the process until all is square.